





# The 1601

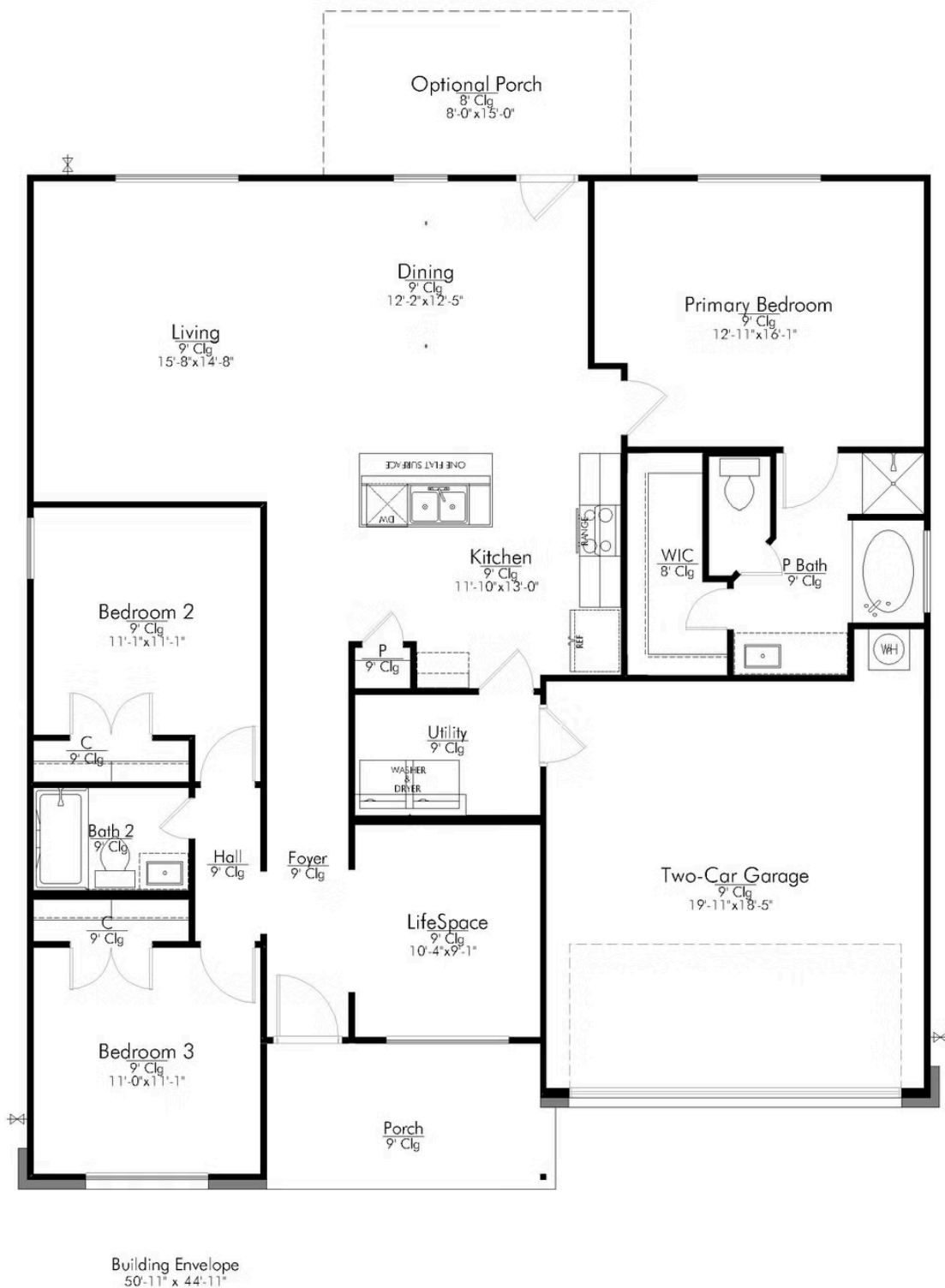


-  **1,601 Ft<sup>2</sup>**
-  **3 Bedrooms**
-  **2 Bathrooms**
-  **2 Car Garage**

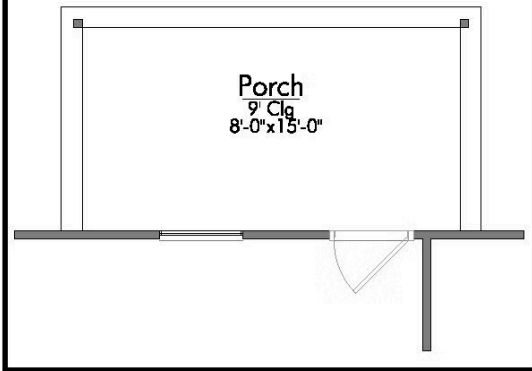
Some images shown may be from a previously built Stylecraft home of similar design. Actual options, colors, and selections may vary. Contact us for details!

Welcome to the 1601 by Stylecraft On Your Lot! This charming 3 bed, 2 bath home starts with a covered front porch and a welcoming foyer that opens to a versatile Life Space—ideal for a home office, craft room, or play area. The opportunities for this space are plentiful! Choose what works best for your lifestyle. The split floor plan ensures privacy, while the open common area is perfect for family gatherings. The kitchen features a central island and a utility room tucked behind it, with convenient access to the garage. The dining room opens to the backyard, making indoor-outdoor living a breeze. Experience comfort and flexibility with the 1601 by Stylecraft On Your Lot. Welcome home!

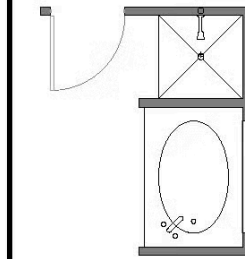




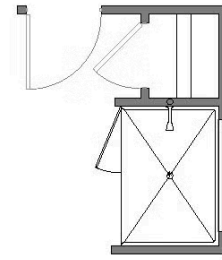
### A: COVERED PORCH



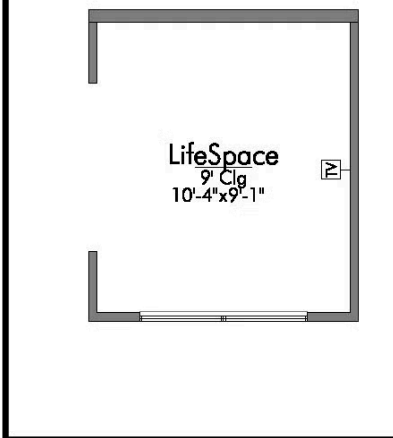
### B: WALK-IN SHOWER



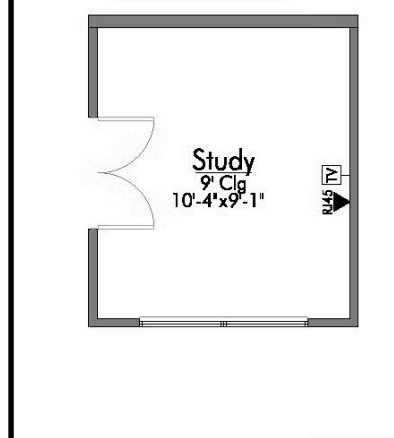
### B: WALK-IN SHOWER



### C: LIFESPACE



### C: STUDY



### P BATH SECOND SINK

