





The 2205



-  **2,237 Ft²**
-  **4 Bedrooms**
-  **3 Bathrooms**
-  **2 Car Garage**

Some images shown may be from a previously built home of similar design. Actual options, colors, and selections may vary. Contact us for details!

Prepare to be swept away by the luxurious and spacious one-story, 4 bedroom, 3 bath floor plan that will capture your heart. The intelligent design of this home maximizes the amount of living space available on a single floor. Step inside and be amazed by the open concept kitchen, living, and dining room combination which provides a stunning backdrop for entertaining and family gatherings. With a large center island, and walk-in pantry - the kitchen acts as the heart of this home. The primary suite is a standout feature of this home. The abundance of natural light pouring in from the large windows creates a warm and inviting atmosphere, while the spacious walk-in closet provides ample storage space. The bathroom is as functionally elegant as it is beautiful, offering a spa-like experience that



The
sui
e s
kin



own land is an excellent
rior designs to choose from
customize to include all the

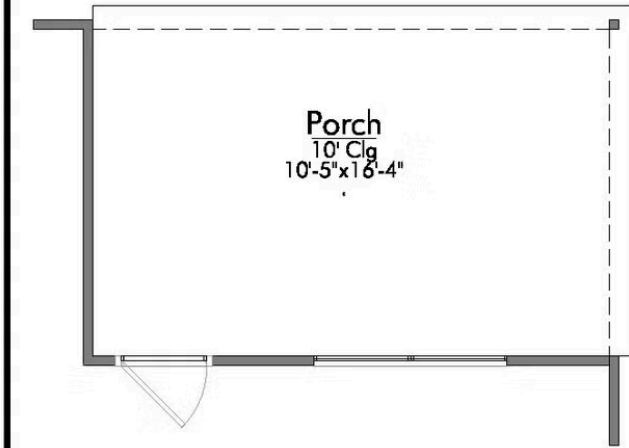


Questions?
866-445-3840

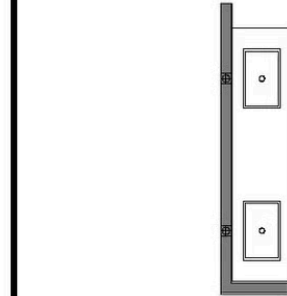


In continuous effort by Stylecraft Builders to improve the quality of your home, we reserve the right to change features, prices, plans and specifications without notice. Floorplans and elevation renderings are artists' conceptions only. Significant changes may be made during or after the construction of the model homes. Stylecraft Builders reserves the right to modify, relocate or eliminate any or all of the features, specifications, plan utilities, design or shape thereof, all without notice or obligations to any purchaser. Price range reflects base price only. Location premiums will be charged for certain locations and are not included in the base price of the home. Additional association fees may apply. Other fees may also apply. Amenities are proposed and planned or may be under construction. All square footages are approximate square footages of the total livable space. Water heater location deemed per city municipality code. Please see your onsite sales associate for additional information and more details. © 2022 Stylecraft Builders.

A: COVERED PORCH

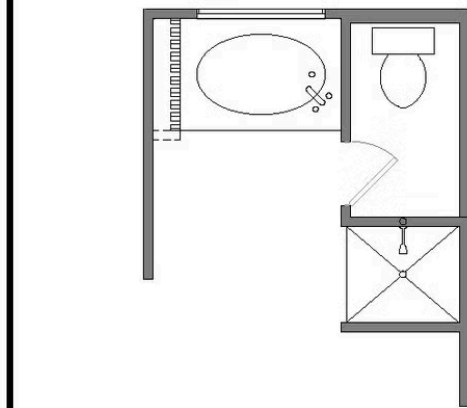


P BATH SECOND SINK



WHEN SELECTED:
 WALK IN SHOWER WITH
 TILE SURROUND TO HAVE
 WINDOW

B: TUB/SHOWER



B: WALK-IN SHOWER

