

The 2516



 **2,577 Ft²**

 **4 - 5 Bedrooms**

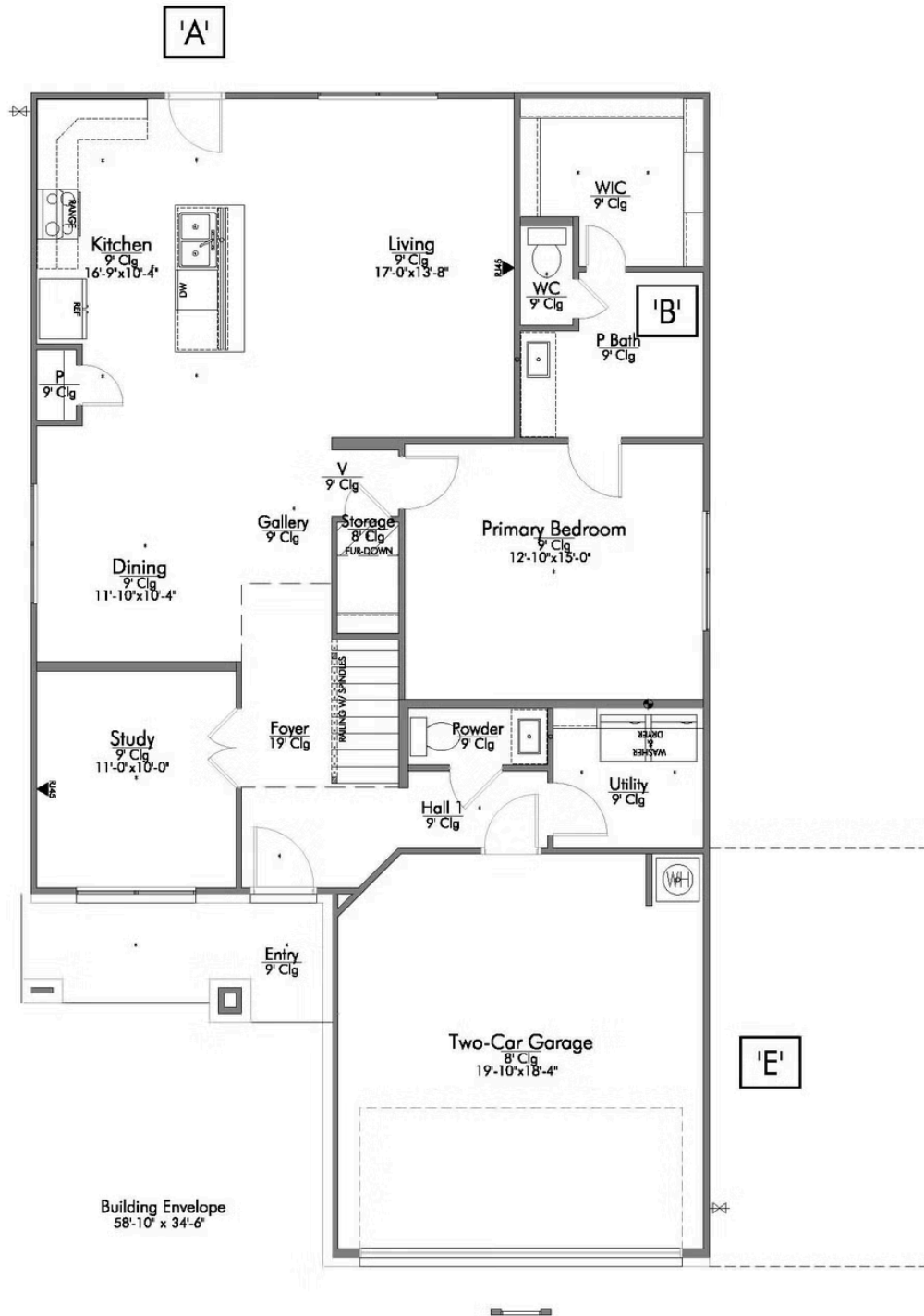
 **2.5 - 3.5
Bathrooms**

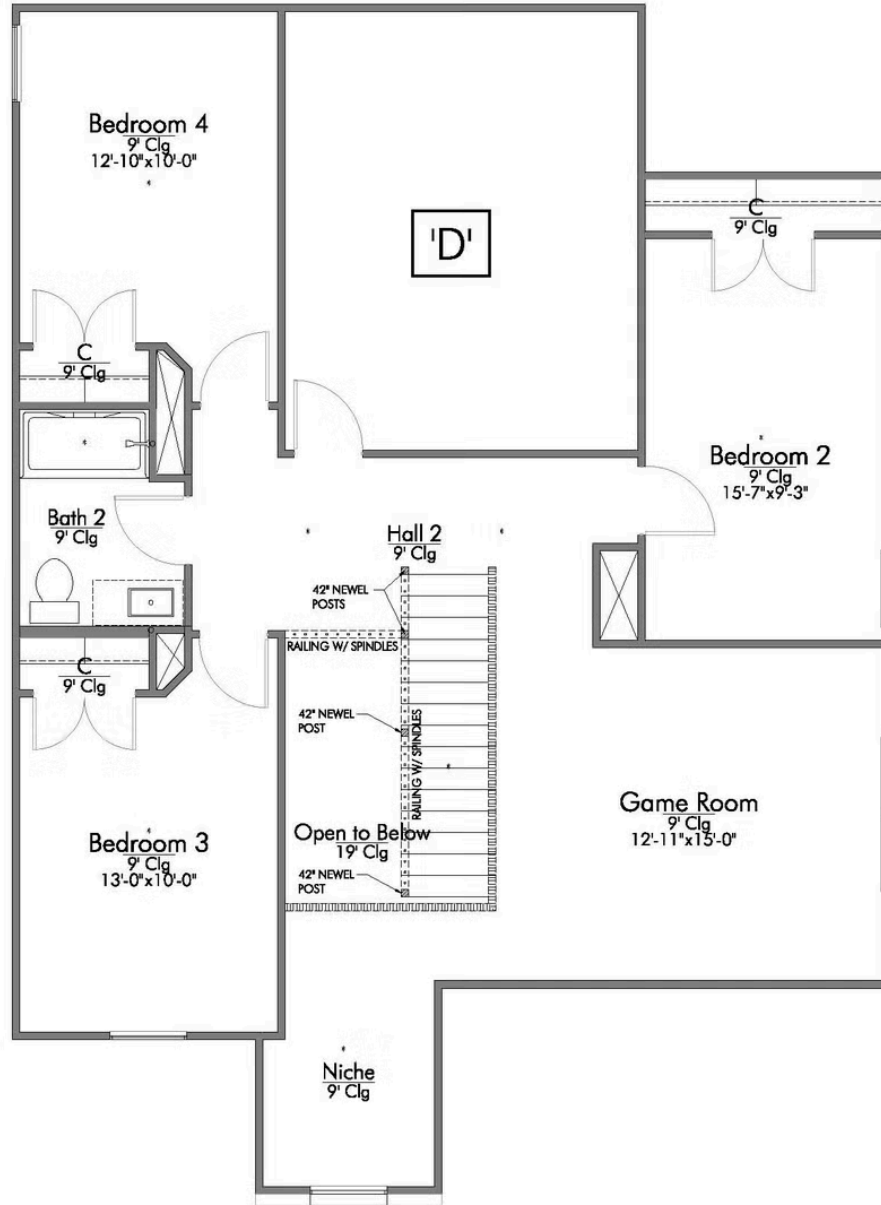
 **2 Car Garage**

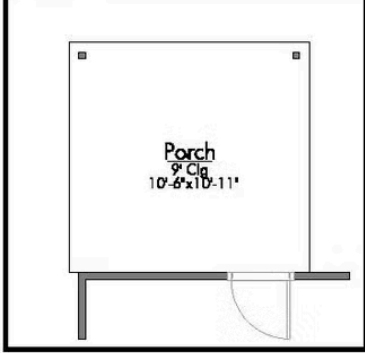
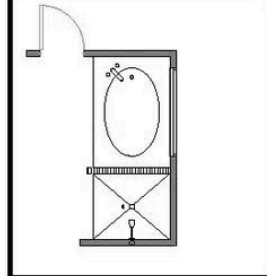
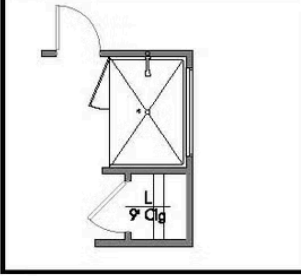
Some images shown may be from a previously built Stylecraft home of similar design. Actual options, colors, and selections may vary. Contact us for details!

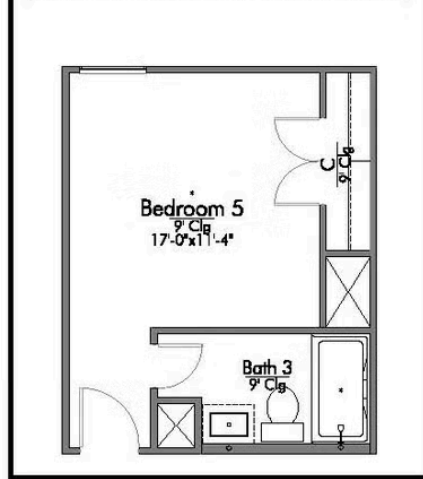
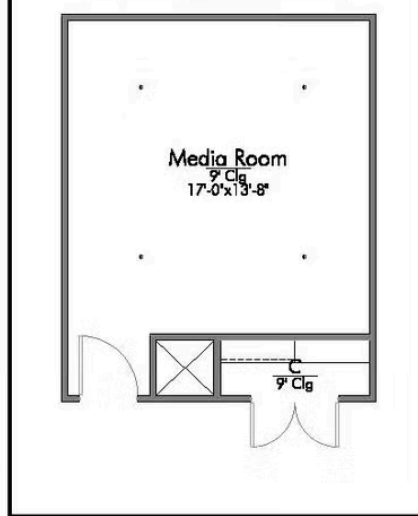
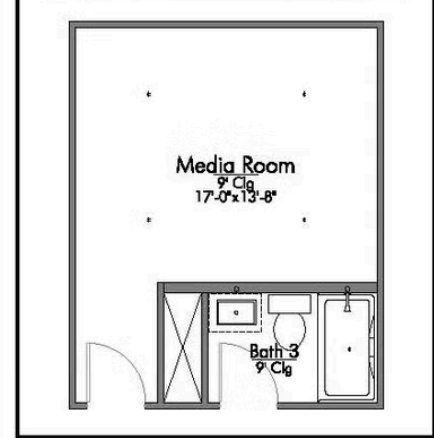
New and improved! Walk into perfection in this spacious, welcoming floor plan! With a formal study, new open kitchen layout, formal dining area, and living room that flow together seamlessly, this floor plan is sure to please those looking for the ideal family home! Our favorite feature is a little surprise that's on the second story of the home that you'll just have to see for yourself.








A: (OPT) COVERED PORCH

B: (OPT) TUB/SHOWER

B: (BASE) WALK-IN SHOWER

P BATH SECOND SINK

D: (OPT) 5TH BEDROOM W/ BATH

D: (BASE) MEDIA ROOM

D: (OPT) MEDIA ROOM W/ BATH

E: (OPT) 3RD CAR GARAGE
