

DEXTER II



QUESTIONS?
GET FAST ANSWERS



2,713 +
SQ.FT.



3 +
BEDROOMS



2.0 +
BATHROOMS



2
STORIES



2 - CAR
GARAGE

This two-story version of our Dexter floor plan is part of our innovative Flex Series, which allows homeowners to personalize the layout of their home to best fit their family. Fit for those looking to maximize their square footage, layout options vary across both levels of the home. On the first floor, homeowners are able to choose between adding 2 bedrooms and 1 bath, a large Texas basement for storage, or a second master suite. Upstairs you are able to decide between having two bedrooms, four bedrooms, a media room, or a combination of 2 bedrooms and a media room. Whether you need a home with 7 bedrooms or a home with 2 bedrooms and plenty of space to entertain, this floor plan is built to fit your needs!

Some images shown may be from a previously built Stylecraft home of similar design. Actual options, colors, and selections may vary. Contact us for details!

Stylecraft Builders reserves the right to change features, prices, plans and specifications without notice. Additional association fees may apply. Other fees may also apply. Please see your onsite sales associate for additional information and more details. © 2021 Stylecraft Builders.



DEXTER II



**QUESTIONS?
GET FAST ANSWERS**

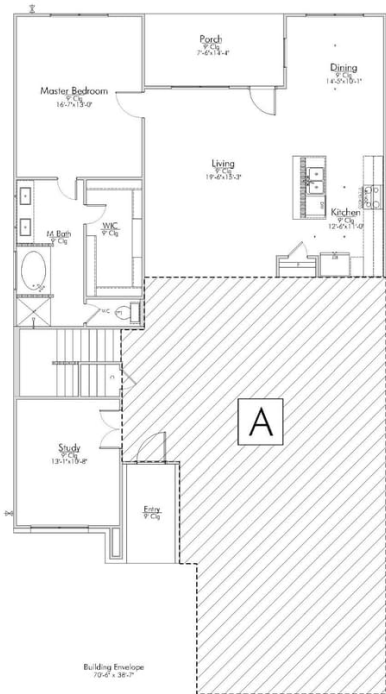
FIRST FLOOR PLAN



1.) 2 BR, 1 BA



2.) ADDITIONAL
BEDROOM SUITE



OPTIONAL 3RD CAR GARAGE
MASONRY WILL MATCH ELEVATION SELECTED

In continuous effort by Stylecraft Builders to improve the quality of your home, we reserve the right to change features, prices, plans and specifications without notice. Floorplans and elevation renderings are artists' conceptions only. Significant changes may be made during or after the construction of the model homes. Stylecraft Builders reserves the right to modify, relocate or eliminate any or all of the features, specifications, masterplan utilities, design or shape thereof, all without notice or obligations to any purchaser. Price range reflects base price only. Location premiums will be charged for certain locations and are not included in the base price of the home. Additional association fees may apply. Other fees may also apply. Amenities are proposed and planned or may be under construction. All square footages are approximate square footages of the total livable space. Water heater location deemed per city municipality code. Please see your onsite sales associate for additional information and more details. © 2021 Stylecraft Builders.



DEXTER II



QUESTIONS?
GET FAST ANSWERS

SMALL UPSTAIRS:

SECOND FLOOR PLAN



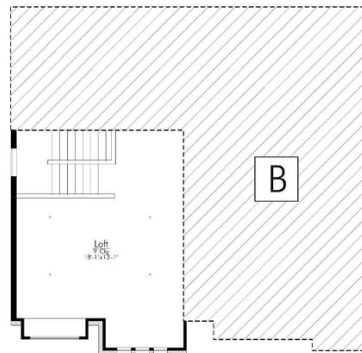
1.) 2 BEDROOMS, 1 BATH 2.) GAME ROOM

LARGE UPSTAIRS:



1.) FOUR BEDROOMS

2.) 2 BEDROOMS W/ GAME ROOM



In continuous effort by Stylecraft Builders to improve the quality of your home, we reserve the right to change features, prices, plans and specifications without notice. Floorplans and elevation renderings are artists' conceptions only. Significant changes may be made during or after the construction of the model homes. Stylecraft Builders reserves the right to modify, relocate or eliminate any or all of the features, specifications, masterplan utilities, design or shape thereof, all without notice or obligations to any purchaser. Price range reflects base price only. Location premiums will be charged for certain locations and are not included in the base price of the home. Additional association fees may apply. Other fees may also apply. Amenities are proposed and planned or may be under construction. All square footages are approximate square footages of the total livable space. Water heater location deemed per city municipality code. Please see your onsite sales associate for additional information and more details. © 2021 Stylecraft Builders.

