

GEARY II



QUESTIONS?
GET FAST ANSWERS



2,837

SQ.FT.



4

BEDROOMS



3.0

BATHROOMS



2

STORIES



2 - CAR

GARAGE

The Geary II floor plan is part of our innovative Flex Series, which allows homeowners to personalize the layout of their home to best fit their family. The kitchen is brimming with style, open with beautiful granite countertops opening up to the living room which is spacious and welcoming. You'll find sanctuary in your master which includes two walk-in closets, garden tub, large tile shower, and double vanity. The master bedroom is already incredibly spacious, but you have the option of adding an extra 7 feet in depth, or having French doors leading out to the covered back porch. This 4 bedroom, 3 bath home has the option of

Stylecraft Builders reserves the right to change features, prices, plans and specifications without notice. Additional association fees may apply. Other fees may also apply. Please see your onsite sales associate for additional information and more details. © 2019 Stylecraft Builders.

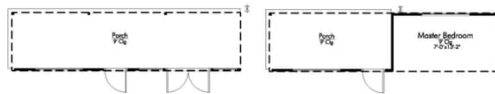


GEARY II



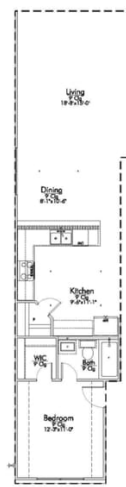
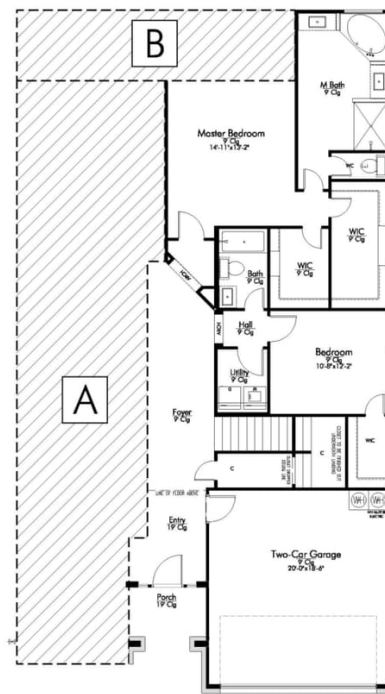
QUESTIONS?
GET FAST ANSWERS

B OPTIONS:



- 1.) EXTENDED PORCH 2.) EXTENDED MASTER BEDROOM

A OPTIONS:



1.) BEDROOM SUITE



2.) STUDY W/DINING



OPTIONAL 3RD CAR GARAGE
MASONRY WILL MATCH ELEVATION SELECTED

In continuous effort by Stylecraft Builders to improve the quality of your home, we reserve the right to change features, prices, plans and specifications without notice. Floorplans and elevation renderings are artists' conceptions only. Significant changes may be made during or after the construction of the model homes. Stylecraft Builders reserves the right to modify, relocate or eliminate any or all of the features, specifications, masterplan utilities, design or shape thereof, all without notice or obligations to any purchaser. Price range reflects base price only. Location premiums will be charged for certain locations and are not included in the base price of the home. Additional association fees may apply. Other fees may also apply. Amenities are proposed and planned or may be under construction. All square footages are approximate square footages of the total livable space. Water heater location deemed per city municipality code. Please see your onsite sales associate for additional information and more details. © 2019 Stylecraft Builders.

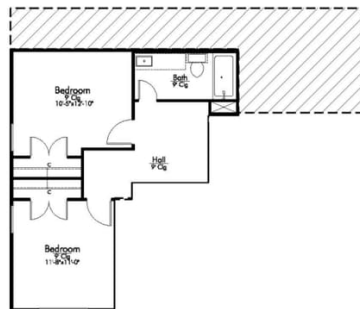
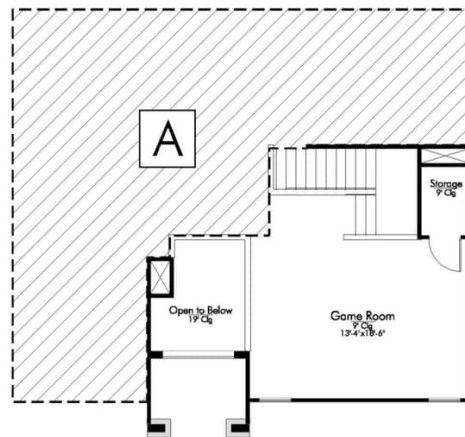


GEARY II

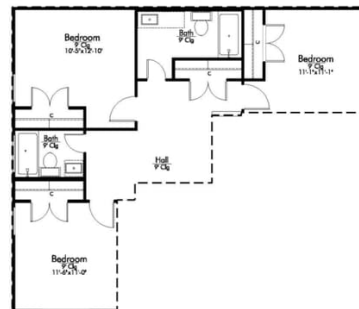


QUESTIONS?
GET FAST ANSWERS

SECOND FLOOR PLAN



1.) GAME ROOM W/2 BR, 1 BA



2.) GAME ROOM W/3 BR, 2 BA

In continuous effort by Stylecraft Builders to improve the quality of your home, we reserve the right to change features, prices, plans and specifications without notice. Floorplans and elevation renderings are artists' conceptions only. Significant changes may be made during or after the construction of the model homes. Stylecraft Builders reserves the right to modify, relocate or eliminate any or all of the features, specifications, masterplan utilities, design or shape thereof, all without notice or obligations to any purchaser. Price range reflects base price only. Location premiums will be charged for certain locations and are not included in the base price of the home. Additional association fees may apply. Other fees may also apply. Amenities are proposed and planned or may be under construction. All square footages are approximate square footages of the total livable space. Water heater location deemed per city municipality code. Please see your onsite sales associate for additional information and more details. © 2019 Stylecraft Builders.

