

GRAHAM



QUESTIONS?
GET FAST ANSWERS



2,823

SQ.FT.



4 +

BEDROOMS



3.5

BATHROOMS



2

STORIES



2 - CAR

GARAGE

Some images shown may be from a previously built Stylecraft home of similar design. Actual options, colors, and selections may vary. Contact us for details!

This floor plan is one of our favorites because of the way the layout perfectly combines functionality and style! With 4 bedrooms and 3.5 baths, this home is inviting and endearing, while still remaining elegant. We think you will love the way the kitchen looks out into the dining room and living room, how inviting the master bedroom is with its vaulted ceilings, and how spacious each closet in the home is. The utility room acts as a traditional mudroom, connecting the kitchen to the garage. In the kitchen you'll find one of the largest pantries in our portfolio - with plenty of built-in storage to feed everyone in your family. Upstairs you'll find 3 additional bedrooms, a large game room that can be converted into a 5th bedroom, and 2 additional full baths.

Stylecraft Builders reserves the right to change features, prices, plans and specifications without notice. Additional association fees may apply. Other fees may also apply.

Please see your onsite sales associate for additional information and more details. ©

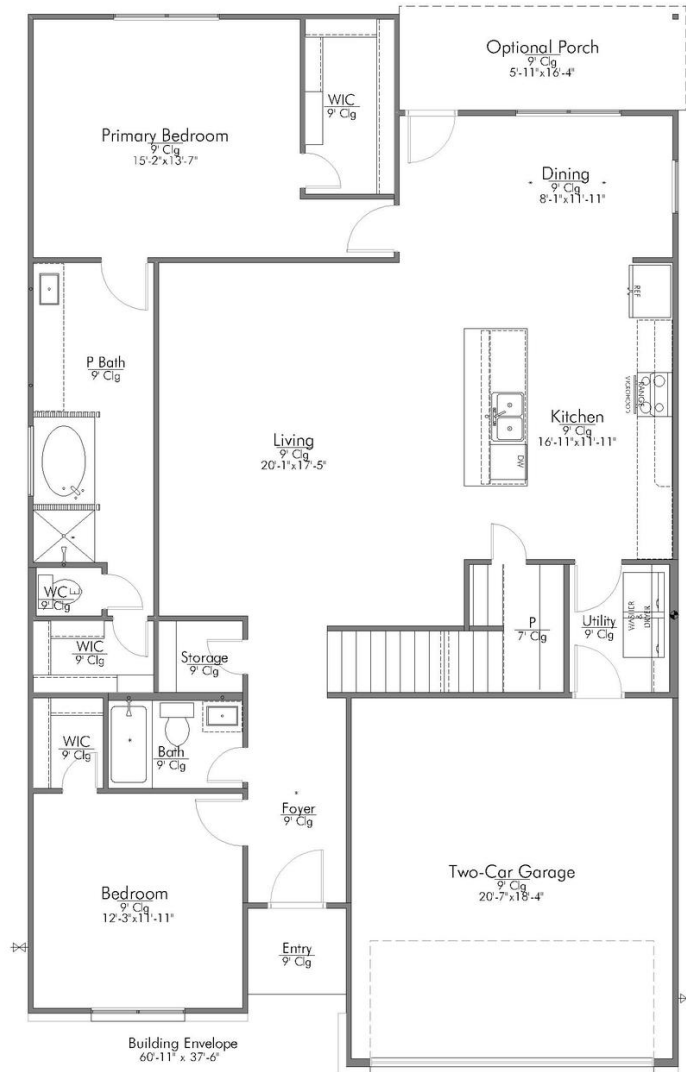
2023 Stylecraft Builders.



GRAHAM



QUESTIONS?
GET FAST ANSWERS



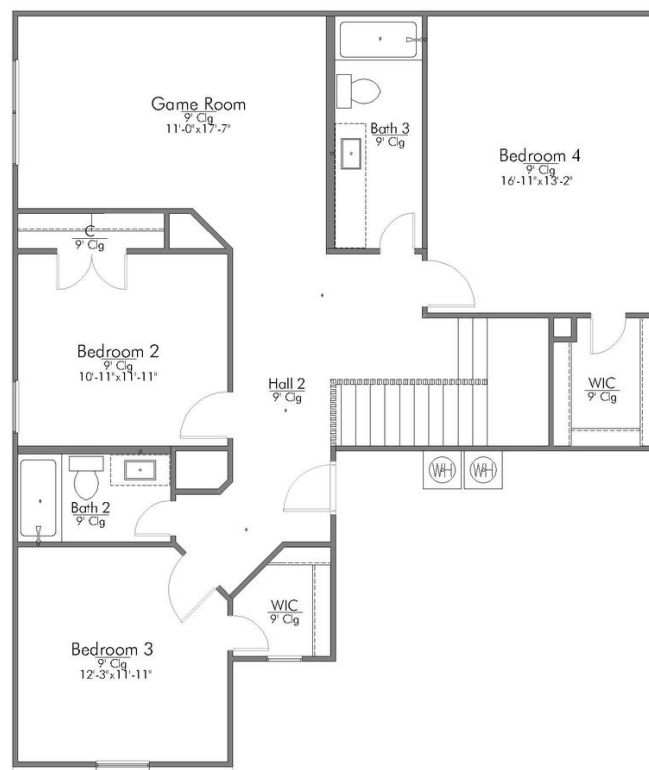
In continuous effort by Stylecraft Builders to improve the quality of your home, we reserve the right to change features, prices, plans and specifications without notice. Floorplans and elevation renderings are artists' conceptions only. Significant changes may be made during or after the construction of the model homes. Stylecraft Builders reserves the right to modify, relocate or eliminate any or all of the features, specifications, masterplan utilities, design or shape thereof, all without notice or obligations to any purchaser. Price range reflects base price only. Location premiums will be charged for certain locations and are not included in the base price of the home. Additional association fees may apply. Other fees may also apply. Amenities are proposed and planned or may be under construction. All square footages are approximate square footages of the total livable space. Water heater location deemed per city municipality code. Please see your onsite sales associate for additional information and more details. © 2023 Stylecraft Builders.



GRAHAM



QUESTIONS?
GET FAST ANSWERS



In continuous effort by Stylecraft Builders to improve the quality of your home, we reserve the right to change features, prices, plans and specifications without notice. Floorplans and elevation renderings are artists' conceptions only. Significant changes may be made during or after the construction of the model homes. Stylecraft Builders reserves the right to modify, relocate or eliminate any or all of the features, specifications, masterplan utilities, design or shape thereof, all without notice or obligations to any purchaser. Price range reflects base price only. Location premiums will be charged for certain locations and are not included in the base price of the home. Additional association fees may apply. Other fees may also apply. Amenities are proposed and planned or may be under construction. All square footages are approximate square footages of the total livable space. Water heater location deemed per city municipality code. Please see your onsite sales associate for additional information and more details. © 2023 Stylecraft Builders.

