

MONROE



QUESTIONS?
GET FAST ANSWERS



1,033

SQ.FT.



2

BEDROOMS



1.0

BATHROOMS



1

STORIES

Some images shown may be from a previously built Stylecraft home of similar design. Actual options, colors, and selections may vary. Contact us for details!

The Monroe floorplan is a stunning representation of functional and comfortable living. From the moment you walk through the front door, you are greeted with an open-concept living area that provides the perfect backdrop for gathering.

The kitchen is large for a home of this square footage, offering plenty of additional counters pace for prep work and storage. The sink looks over your formal dining area and into the open living space.

Featuring 2 bedrooms and a shared central bath with dual vanities, this home offers the flexibility for young families, a second living quarters, or investment property.

Stylecraft Builders reserves the right to change features, prices, plans and specifications without notice. Additional association fees may apply. Other fees may also apply.

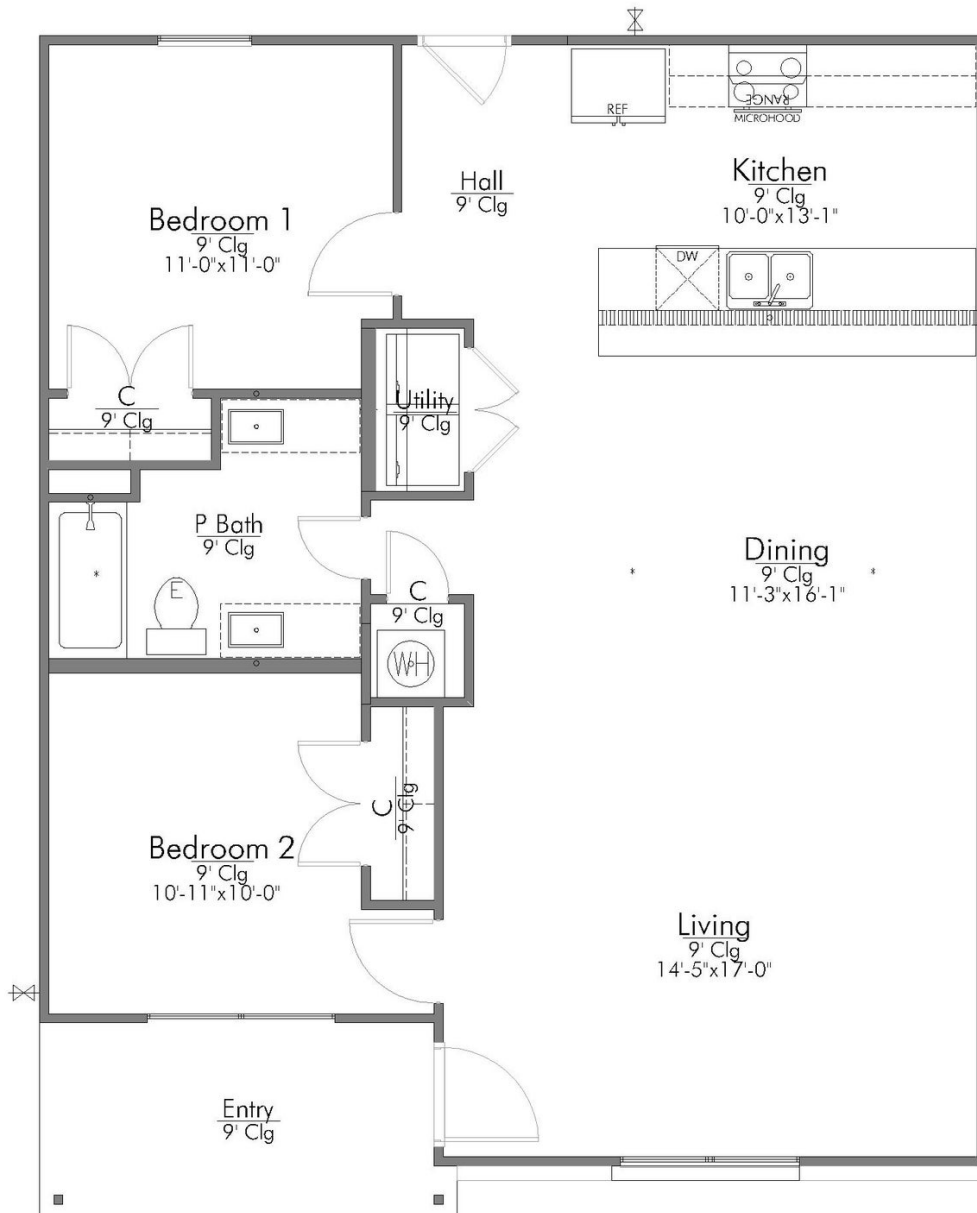
Please see your onsite sales associate for additional information and more details. © 2024 Stylecraft Builders.



MONROE



QUESTIONS?
GET FAST ANSWERS



In continuous effort by Stylecraft Builders to improve the quality of your home, we reserve the right to change features, prices, plans and specifications without notice. Floorplans and elevation renderings are artists' conceptions only. Significant changes may be made during or after the construction of the model homes. Stylecraft Builders reserves the right to modify, relocate or eliminate any or all of the features, specifications, masterplan utilities, design or shape thereof, all without notice or obligations to any purchaser. Price range reflects base price only. Location premiums will be charged for certain locations and are not included in the base price of the home. Additional association fees may apply. Other fees may also apply. Amenities are proposed and planned or may be under construction. All square footages are approximate square footages of the total livable space. Water heater location deemed per city municipality code. Please see your onsite sales associate for additional information and more details. © 2024 Stylecraft Builders.

