

S-2082



**QUESTIONS?
GET FAST ANSWERS**



2,041 +
SQ.FT.



4
BEDROOMS



2.0 +
BATHROOMS



1
STORIES



2 - CAR
GARAGE

This 4 bedroom, 2-3 bath home is exactly what you've been looking for. It's the perfect home for a multi-generational family, those looking for a private space for guests, or added privacy for one of your children. With walk-in closets in every bedroom and dual walk-in closets in the primary, you won't run out of storage space. Walk into your open concept living area, where you'll have more than enough room to cuddle up or host all of your friends and family.

Some images shown may be from a previously built Stylecraft home of similar design. Actual options, colors, and selections may vary. Contact us for details!

Stylecraft Builders reserves the right to change features, prices, plans and specifications without notice. Additional association fees may apply. Other fees may also apply. Please see your onsite sales associate for additional information and more details. © 2022 Stylecraft Builders.



S-2082



QUESTIONS? GET FAST ANSWERS

S2082



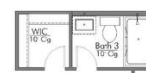
OPTIONAL SINK



OPTIONAL FIREPLACE



OPTIONAL 3RD BATHROOM



In continuous effort by Stylecraft Builders to improve the quality of your home, we reserve the right to change features, prices, plans and specifications without notice. Floorplans and elevation renderings are artists' conceptions only. Significant changes may be made during or after the construction of the model homes. Stylecraft Builders reserves the right to modify, relocate or eliminate any or all of the features, specifications, masterplan utilities, design or shape thereof, all without notice or obligations to any purchaser. Price range reflects base price only. Location premiums will be charged for certain locations and are not included in the base price of the home. Additional association fees may apply. Other fees may also apply. Amenities are proposed and planned or may be under construction. All square footages are approximate square footages of the total livable space. Water heater location deemed per city municipality code. Please see your onsite sales associate for additional information and more details. © 2022 Stylecraft Builders.

