


The 2588

[The Estates at Vintage Farms Community](#)




PRICE FROM:

\$406,900

 2,598 - 2693
Ft²

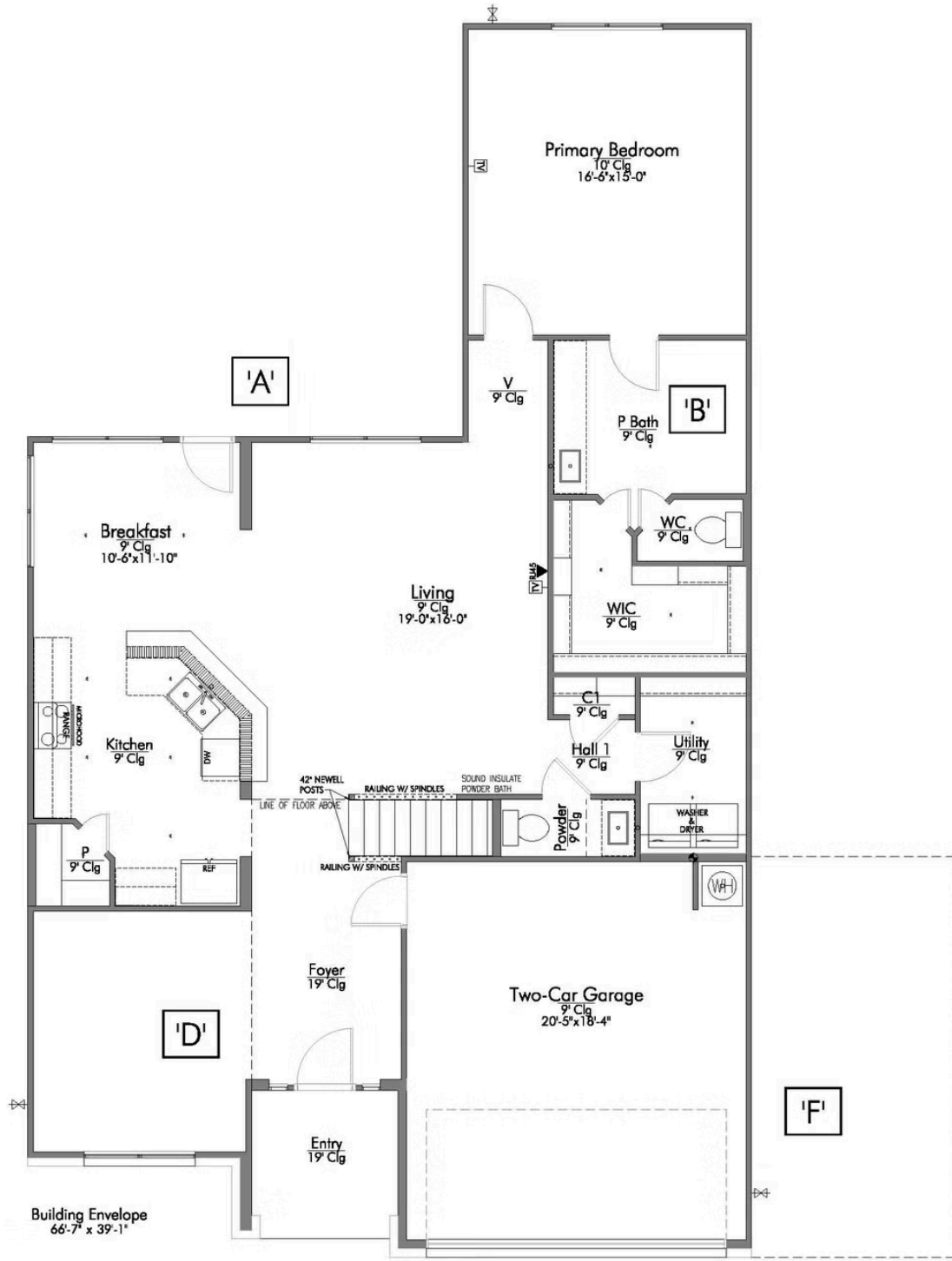
 4 Bedrooms

 2.5 - 3.5
Bathrooms

 2 - 3 Car
Garage

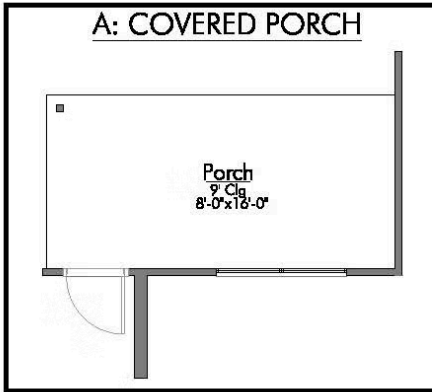
Some images shown may be from a previously built Stylecraft home of similar design. Actual options, colors, and selections may vary. Contact us for details!

Looking to wow your visitors? You are instantly going to fall in love with this luxurious 4 bedroom, 2.5 bath home! The curb appeal of this home is to die for and the entrance to this home is truly stunning. You're immediately greeted by a grand 19-foot foyer. Once inside, you will be wowed by the spacious and thoughtful layout, a large utility room, and all of the natural light let in by the windows in the breakfast nook and living room. Also on the main floor is an oversized primary bedroom suite with a walk-in closet that dreams are made of. Upstairs, you will find spacious secondary bedrooms and a loft that your family will love.

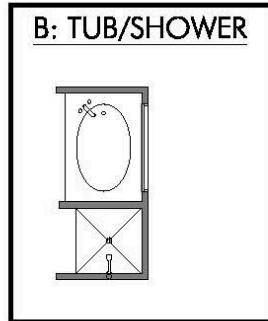




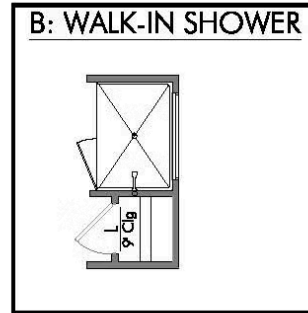
A: COVERED PORCH



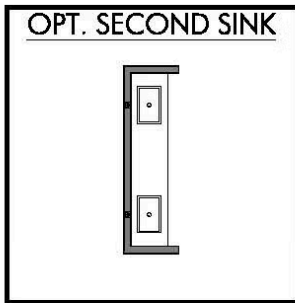
B: TUB/ShOWER



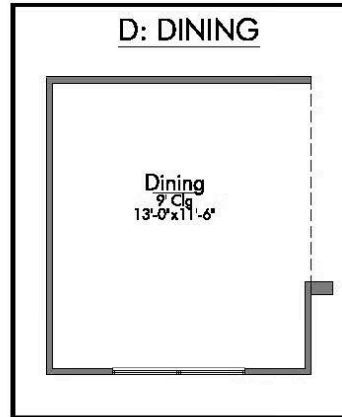
B: WALK-IN SHOWER



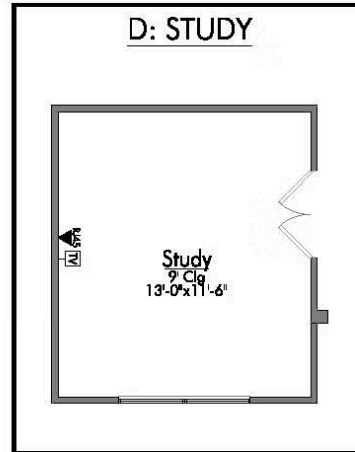
OPT. SECOND SINK



D: DINING

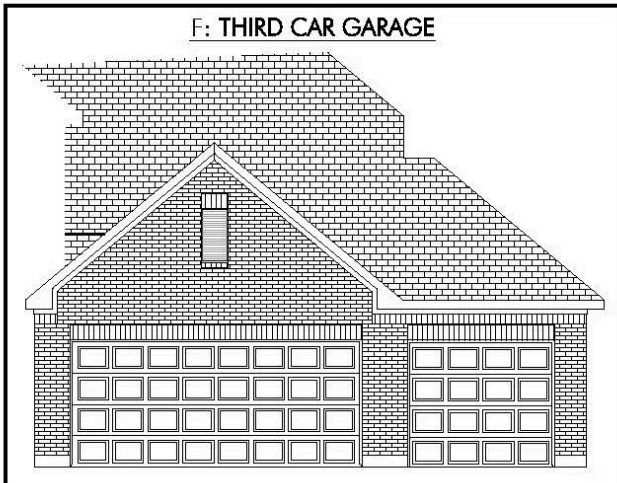


D: STUDY

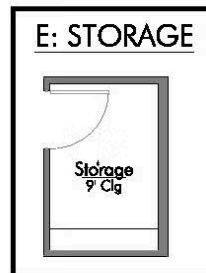


LOCATE:
1 EXTRA RJ45 OUTLET
1 EXTRA TV OUTLET

F: THIRD CAR GARAGE



E: STORAGE



E: THIRD BATHROOM

