

# 4832 Native Tree Lane BRYAN, TX 77845

[The Executive Collection at Yaupon Trails Community](#)



PRICE:

**\$429,900**

 **2,657 Ft<sup>2</sup>**

 **4 Bedrooms**

 **3.5 Bathrooms**

 **2 Car Garage**

New and improved! Walk into perfection in this spacious, welcoming floor plan! With a formal study, new open kitchen layout, formal dining area, and living room that flow together seamlessly, this floor plan is sure to please those looking for the ideal family home! Our favorite feature is a little surprise that's on the second story of the home that you'll just have to see for yourself.

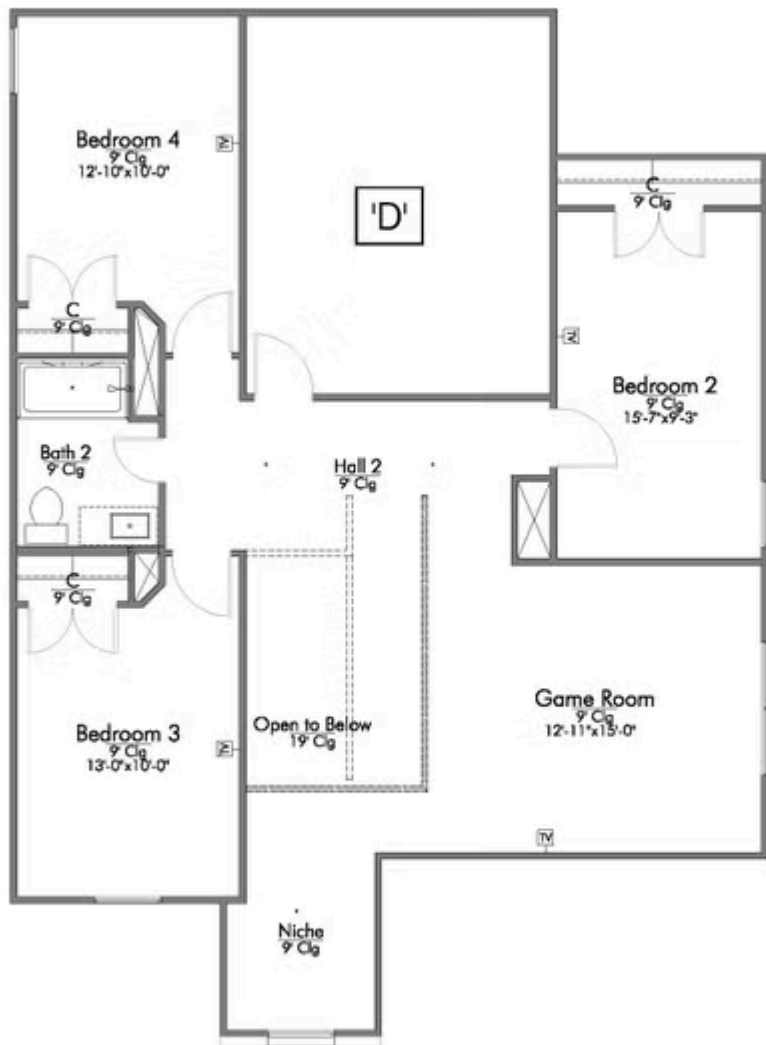
Additional Options Included: A Head Klocker Cabinet in Each Bathroom, Pendant Lighting in the Kitchen, Under Cabinet Lighting, a Decorative Tile Backsplash, Integral Miniblinds in the Rear Door, a Single Basin Kitchen Sink, an Additional Full Bathroom, and Painted Cabinets Throughout





## Questions?

866-445-3840



*In continuous effort by Stylecraft Builders to improve the quality of your home, we reserve the right to change features, prices, plans and specifications without notice. Floorplans and elevation renderings are artists' conceptions only. Significant changes may be made during or after the construction of the model homes. Stylecraft Builders reserves the right to modify, relocate or eliminate any or all of the features, specifications, plan utilities, design or shape thereof, all without notice or obligations to any purchaser. Price range reflects base price only. Location premiums will be charged for certain locations and are not included in the base price of the home. Additional association fees may apply. Other fees may also apply. Amenities are proposed and planned or may be under construction. All square footages are approximate square footages of the total livable space. Water heater location deemed per city municipality code. Please see your onsite sales associate for additional information and more details. © 2022 Stylecraft Builders.*





