

# The 1363

Arrowhead Farms Community



PRICE FROM:

**\$265,900**

 **1,349 Ft<sup>2</sup>**

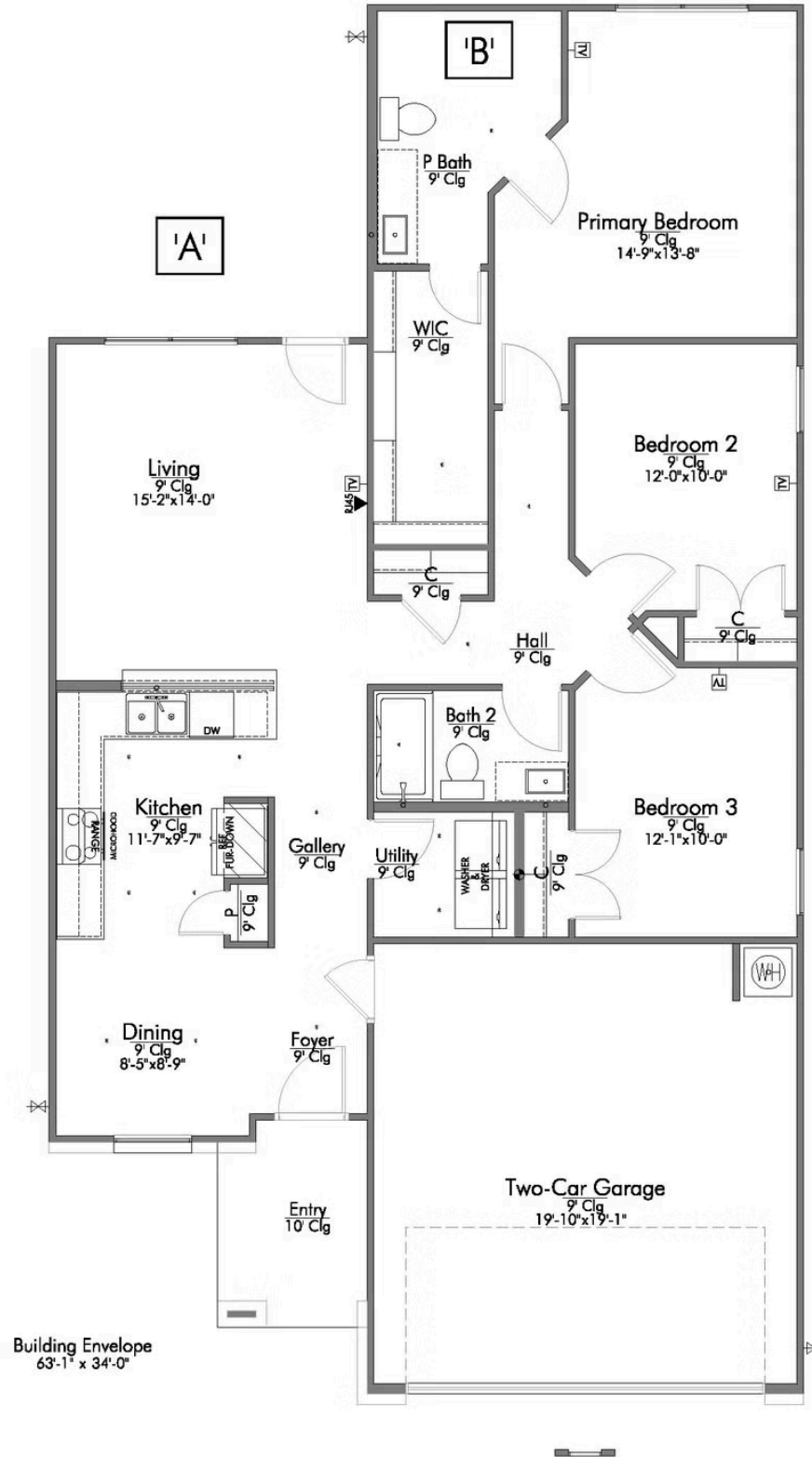
 **3 Bedrooms**

 **2 Bathrooms**

 **2 Car Garage**

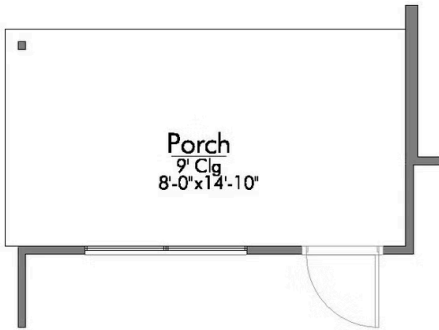
Some images shown may be from a previously built Stylecraft home of similar design. Actual options, colors, and selections may vary. Contact us for details!

This charming 3 bedroom, 2 bath home is spacious with a versatile design! Featuring a foyer and galley way entrance, this home feels elegant and special immediately upon your entrance. Some of our favorite things about this floor plan are its large primary bedroom, which includes a massive closet, and enough space for a sitting area in front of the window beaming with natural light. This home is great for entertaining, with so much counter space and its separate formal dining room that flows seamlessly into the kitchen.

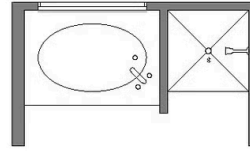




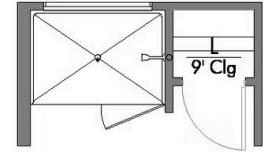
A: COVERED PORCH



B: TUB/SHOWER



B: WALK-IN SHOWER



P BATH SECOND SINK

