

The 1462

[Stillwater Ranch Community](#)



Some images shown may be from a previously built Stylecraft home of similar design. Actual options, colors, and selections may vary. Contact us for details!

PRICE FROM:

\$262,900

 **1,476 Ft²**

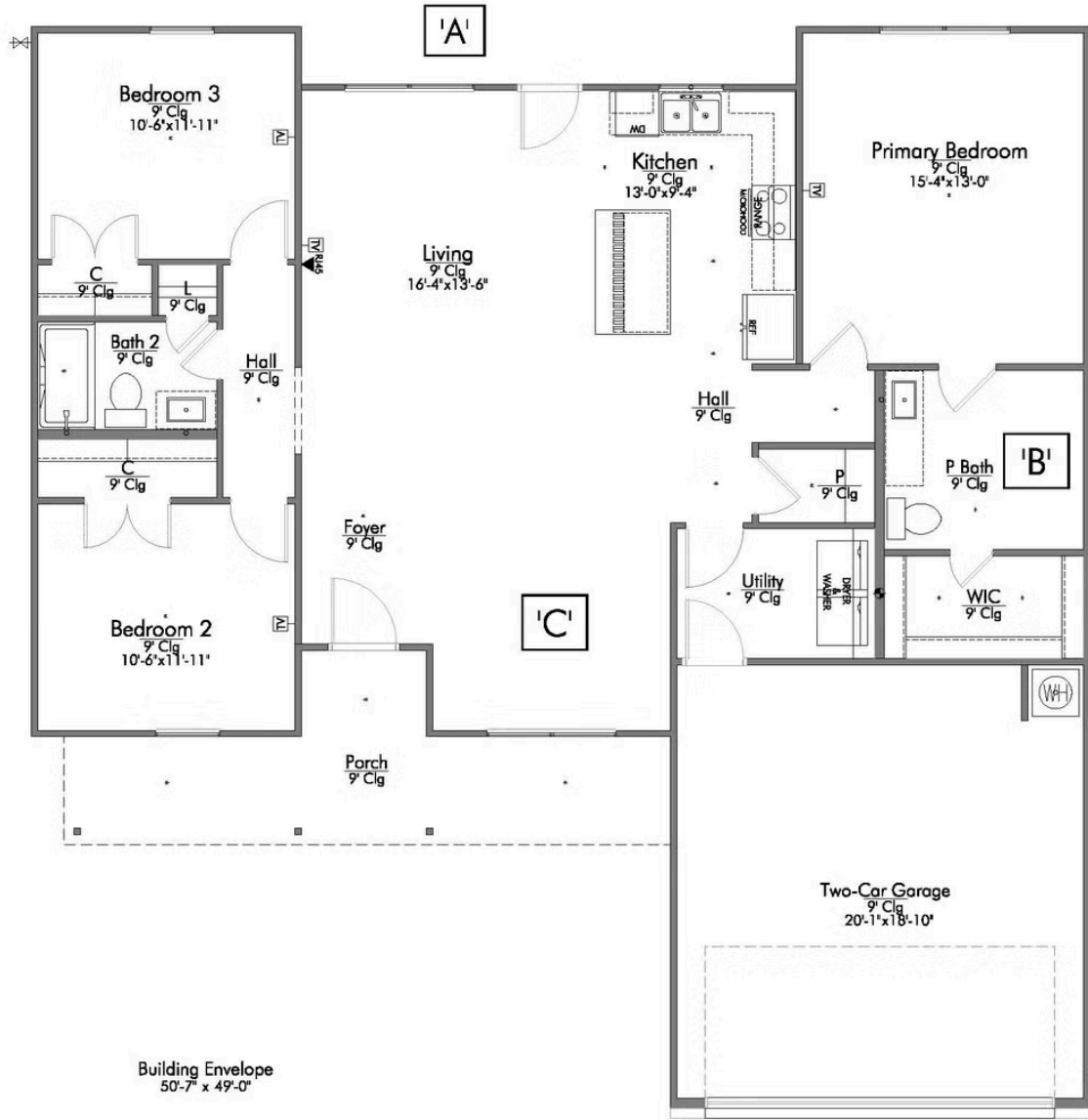
 **3 - 4 Bedrooms**

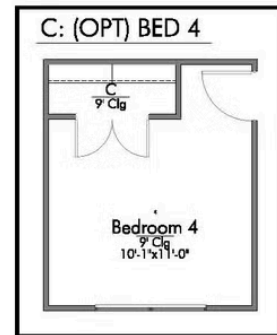
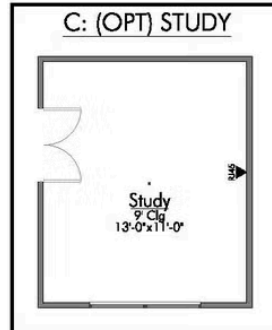
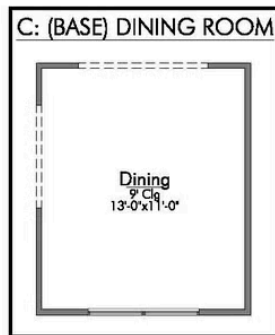
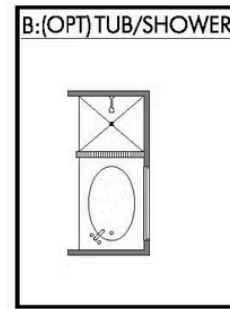
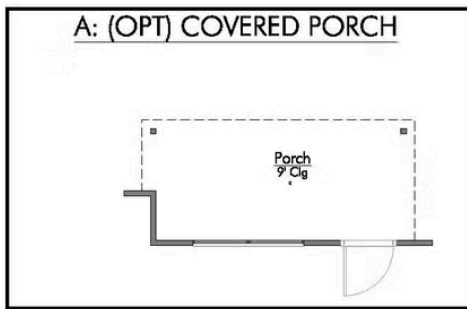
 **2 Bathrooms**

 **2 Car Garage**

The 1462 offers a welcoming layout starting with a spacious front porch that leads into an open living and dining area designed for relaxing, gathering, and everyday living. The kitchen features an island, a walk-in pantry, and a sink positioned under a window overlooking the backyard. This flexible plan allows you to add a formal dining room, covered porch, study, or even a fourth bedroom to fit your needs. A convenient walk-through utility room connects key areas of the home, while the oversized primary bedroom and bathroom flow seamlessly into a generous walk-in closet. On the opposite side, two secondary bedrooms share a centrally located bathroom with its own linen closet for added storage, creating a thoughtful balance of comfort, privacy, and functionality.







LOCATE:
1 EXTRA RJ45 OUTLET

