

# The 1540

[Stillwater Ranch Community](#)



Some images shown may be from a previously built Stylecraft home of similar design. Actual options, colors, and selections may vary. Contact us for details!

PRICE FROM:

**\$267,900**

 **1,540 Ft<sup>2</sup>**

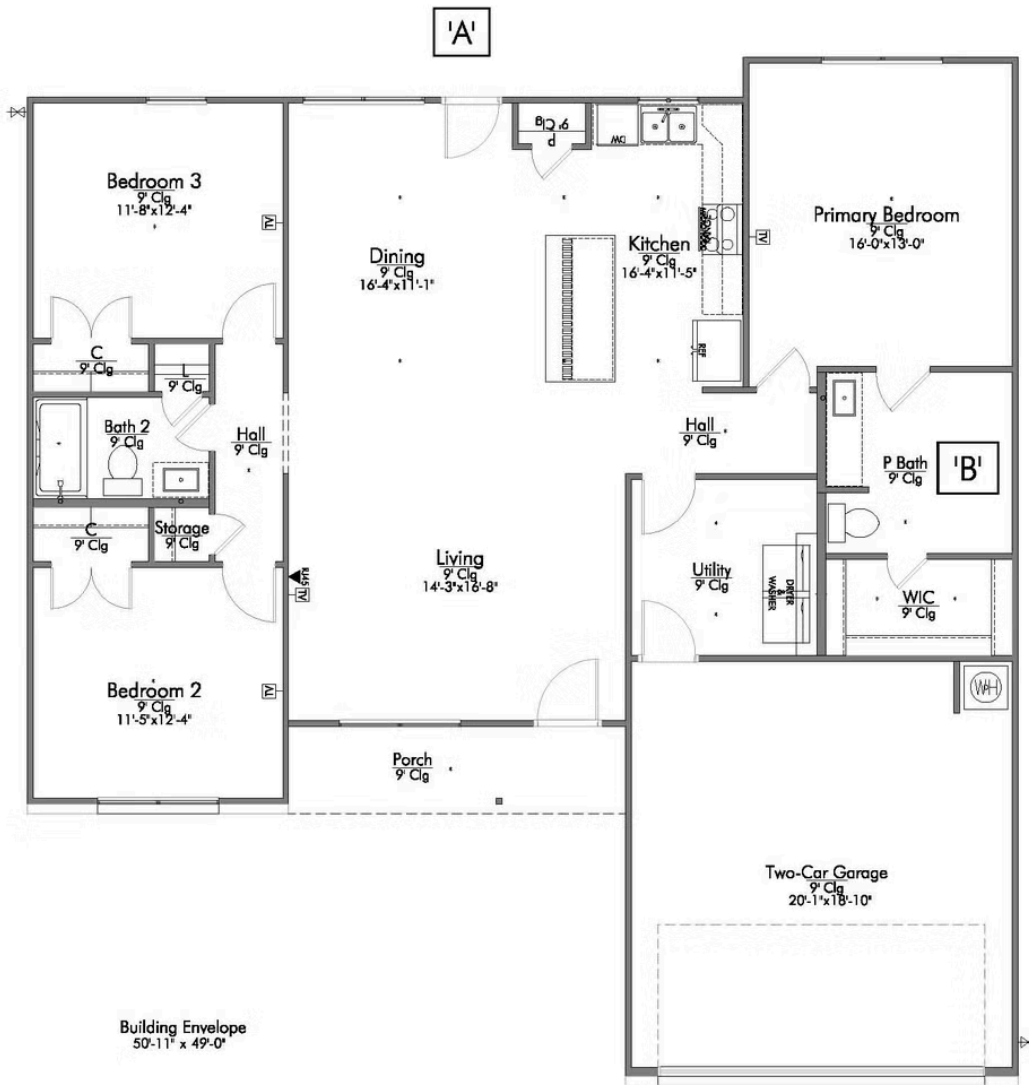
 **3 Bedrooms**

 **2 Bathrooms**

 **2 Car Garage**

The 1540 offers a spacious and flexible layout that begins with a welcoming front porch and opens into a large living and dining area perfect for gathering, relaxing, and everyday life. The kitchen features an island, abundant counter space, and a pantry located near the back door. A window above the sink provides a clear view of the backyard, adding natural light to the space! An oversized utility room offers extra convenience and storage, while the primary bedroom and bathroom flow into a generous walk-in closet. On the opposite side of the home, two secondary bedrooms share a centrally located bathroom complete with its own linen closet, along with an additional hallway storage closet that adds even more functionality to this thoughtfully designed home.



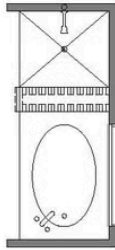




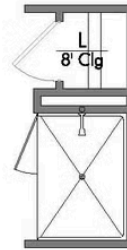
## P BATH SECOND SINK



## B: (OPT) TUB/SHOWER



## B:(BASE) WALK-IN SHOWER



## A: (OPT) COVERED PORCH

