



Derby Meadows

 LINDALE, TX 75771**Community Contact:**

Tanner
903-308-5035

Price Range:

\$242,900 - \$342,900

Sq.Ft. Range:

1,262 - 2,587

Discover your next home at Derby Meadows, a thoughtfully planned community nestled in charming Lindale, Texas. Located just off the intersection of I-20 and U.S. Hwy 69, this neighborhood offers both peaceful suburban surroundings and direct access to major employment hubs across the region. Lindale is emerging as a significant manufacturing and logistics center, supported by a strong workforce and modern infrastructure. Life at Derby Meadows puts you minutes from local favorites for dining and fun. Choose from top eateries like Petty's Steak & Catfish for a hearty Texas meal, or La Cascio's Scratch Italian for something more refined. On the entertainment side, Lindale delivers with attractions such as the boutique shopping and wine-tasting at The Pink Pistol and Red 55 Winery, or family-friendly outings to Darden Harvest Park and the Pickers Pavilion. With its modern homes, ideal location near work and play, and access to community amenities that celebrate local culture and East Texas flavor, Derby Meadows offers a wonderful opportunity to live well in Lindale. Visit today and imagine your future here!




	All
	Available Homes
	Available Lots
	Sold Homes
	Unavailable Lots

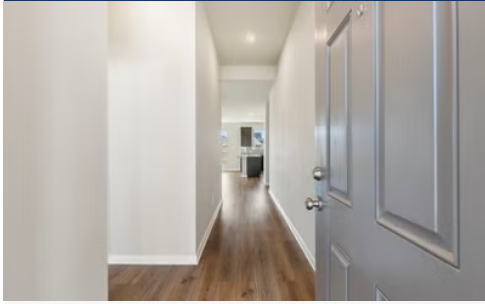


DERBY MEADOWS

PHASE 1
LINDALE, TX



READY FALL 2026



**16029 Sir Barton Drive Lindale, TX
75771 | Single Family**

Derby Meadows Community

\$263,900

 **1,510 Ft²**

 **3 Bed**

 **2 Bath**

 **2 Car Garage**

READY FALL 2026



**16025 Sir Barton Drive Lindale, TX
75771 | Single Family**

Derby Meadows Community

\$273,900

 **1,654 Ft²**

 **4 Bed**

 **2 Bath**

 **2 Car Garage**

READY LATE SUMMER 2026



**16045 Sir Barton Drive Lindale, TX
75771 | Single Family**

Derby Meadows Community

\$300,900

 **2,082 Ft²**

 **4 Bed**

 **3 Bath**

 **2 Car Garage**

READY FALL 2026



**16044 Sir Barton Drive Lindale, TX
75771 | Single Family**

Derby Meadows Community

\$342,900

 **2,587 Ft²**

 **4 Bed**

 **2.5 Bath**

 **2 Car Garage**