

410 University Avenue TROY, TX 76579

The Village at Elm Creek Community



PRICE:

~~\$235,300~~

\$229,900

 1,266 Ft²

 3 Bedrooms

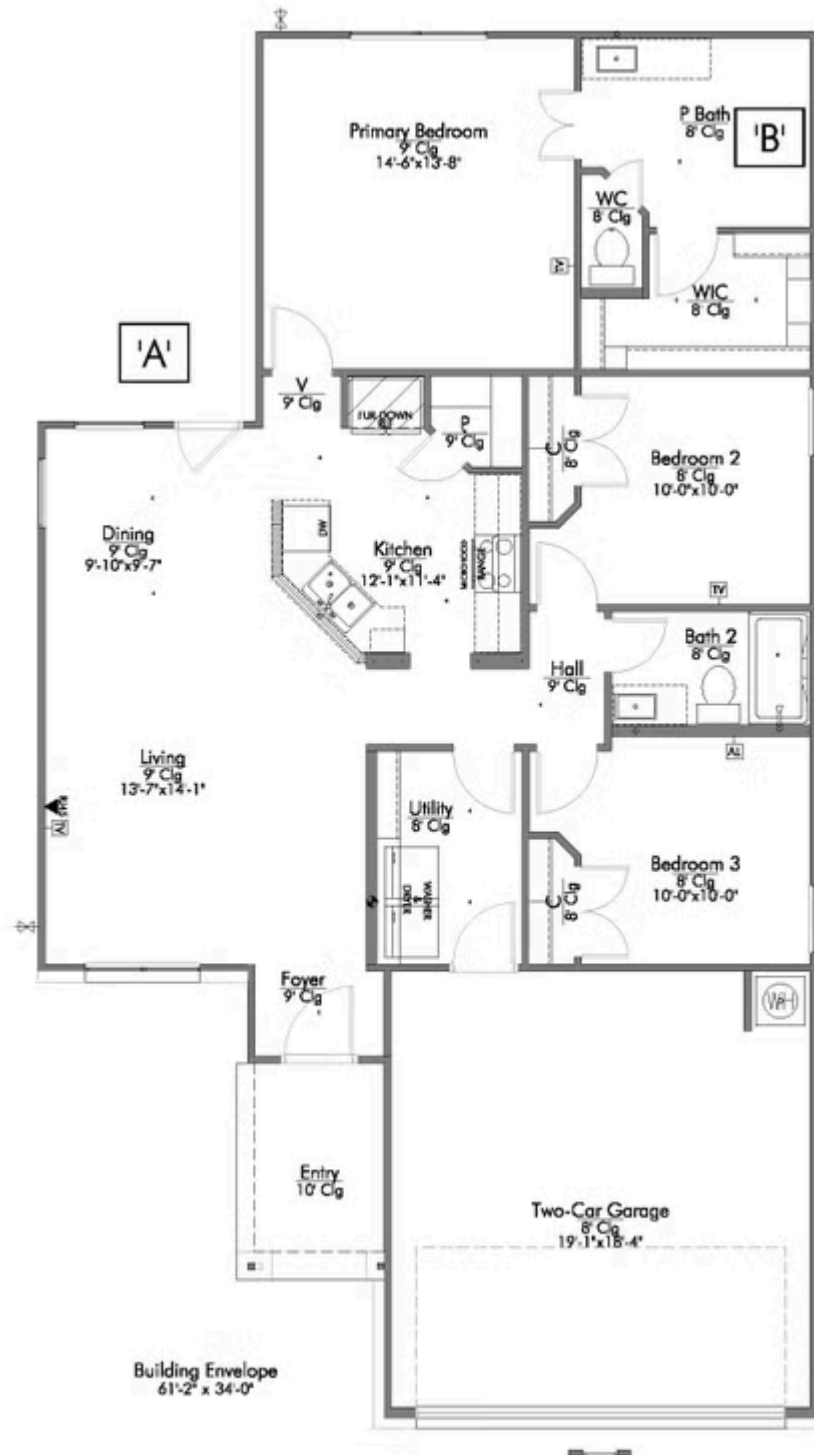
 2 Bathrooms

 2 Car Garage

This home is one of our most popular floor plans, and for good reason! We love the way the corner kitchen looks out into the open concept living room and dining area, giving you the opportunity to feel connected with those in your home. We've maximized your space to give everyone in your family ample room. From your vast walk-in closet in the primary bedroom, and a separate garden tub and shower, to the large cabinet and granite countertop in the utility room, this home is luxurious without an enormous price tag.

Additional options included: Integral miniblinds in the rear door, a dual primary bathroom vanity, a ceiling fan, additional led recessed lighting, kitchen is prewired for pendant lighting, 42" kitchen cabinets, and stainless steel appliances



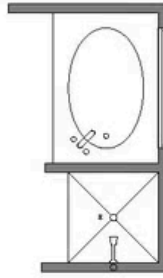




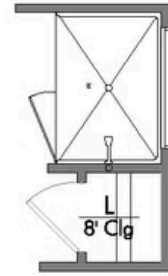
A: COVERED PORCH



B: TUB/ShOWER



B: WALK-IN SHOWER



P BATH SECOND SINK

