

406 University Avenue TROY, TX 76579

[The Village at Elm Creek Community](#)



PRICE:

\$240,300

 1,354 Ft²

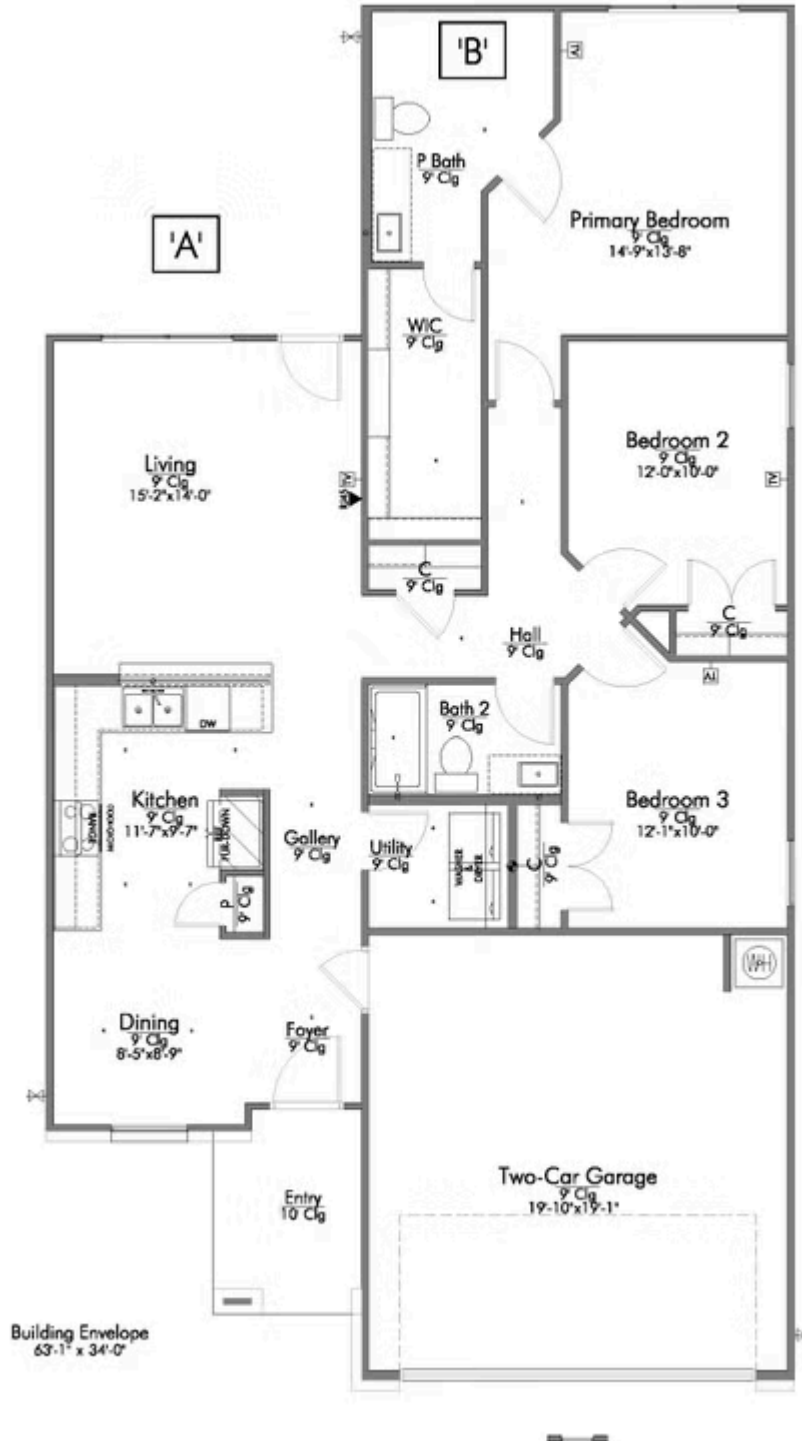
 3 Bedrooms

 2 Bathrooms

 2 Car Garage

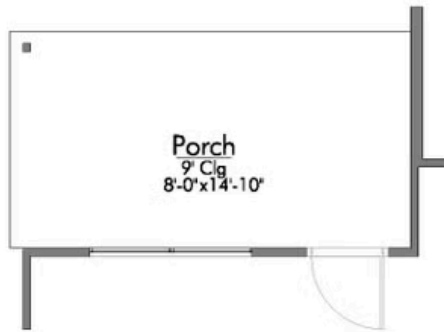
This charming 3 bedroom, 2 bath home is spacious with a versatile design! Featuring a foyer and galley way entrance, this home feels elegant and special immediately upon your entrance. Some of our favorite things about this floor plan are its large primary bedroom, which includes a massive closet, and enough space for a sitting area in front of the window beaming with natural light. This home is great for entertaining, with so much counter space and its separate formal dining room that flows seamlessly into the kitchen.

Additional Options Included: Stainless Steel Appliances, a Decorative Tile Backsplash, Integral Miniblinds in the Rear Door, Additional LED Recessed Lighting, a Dual Primary Bathroom Vanity, and a Single Basin Kitchen Sink

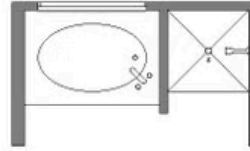




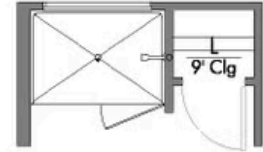
A: COVERED PORCH



B: TUB/SHOWER



B: WALK-IN SHOWER



P BATH SECOND SINK





